

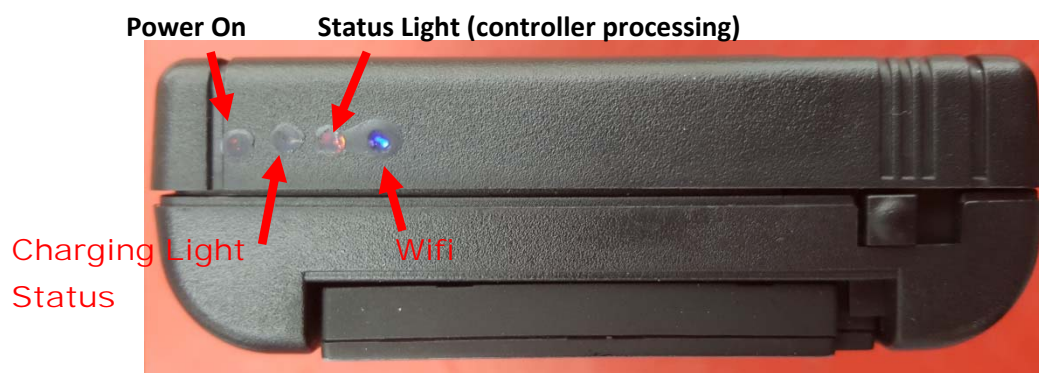
GBZ Guide





GBZ controls

MODE + A	Wifi Off
MODE + B	Wifi On
MODE + X	Audio Amp Off
MODE + Y	Audio Amp On
MODE + START	'Info Mode' On
MODE + SELECT	'Info Mode' Off
MODE + D-PAD UP	Backlight Brightness Increase
MODE + D-PAD DOWN	Backlight Brightness Decrease



RetroPie/Emulation Station Controls

When selecting a game, press 'a' button.

For a configuration menu, press 'a' button when prompted.

This menu allows you to change various settings for the selected ROM/Emulator.

*I recommend not changing any settings in this menu, aside from the emulator used for that selected ROM file, only if you are having issues with that ROM with the current emulator.

Inside the ROM

Start + Select	Exits the current ROM back to the ROM list
Select + L Button	Load State Save
Select + R Button	Save State
Select + D-pad Right	Increase the state save slot number
Select + D-pad Left	Decrease the state save slot number
Select + X	RGUI Menu (Remap controls – emulation station wide, not per ROM)
Select + B	Reset ROM

Transferring ROMS

There are 2 basic(easy ways to do it)

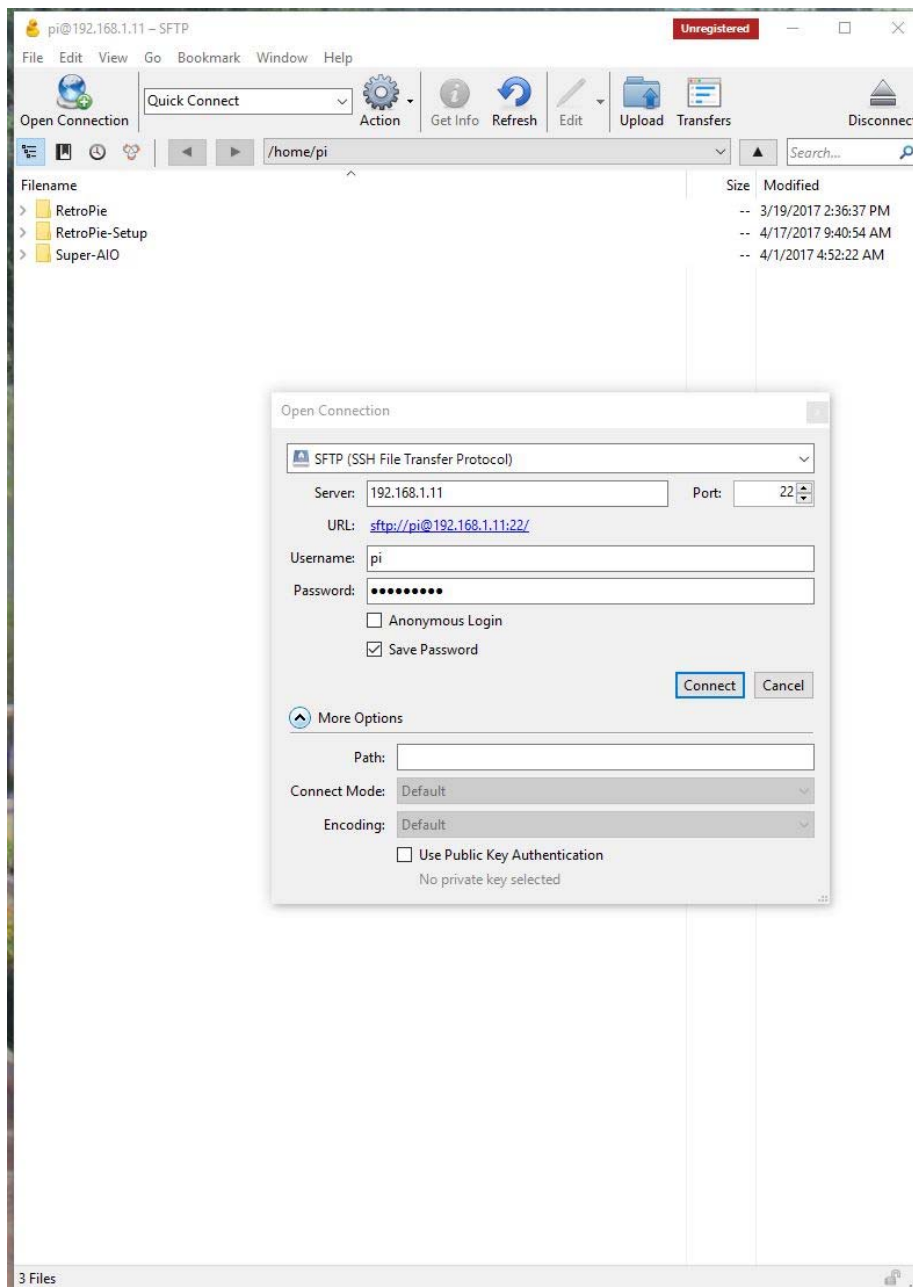
1. USB Stick

- (ensure that your USB is formatted to FAT32)
- first create a folder called retropie on your USB stick
- plug it into the pi and wait for it to finish blinking
- pull the USB out and plug it into a computer
- add the roms to their respective folders (in the retropie/roms folder)
- plug it back into the raspberry pi
- wait for it to finish blinking
- refresh emulationstation by pressing F4, or choosing quit from the start menu

2. SSH File transfer

This method is using your wireless network and a computer.

Download Cyberduck or **NAME**



- a. You have to choose SSH protocol.
- b. Input the IP address of your GBZ

2 ways to find that information.

First is quit out of Emulation Station by pressing F4 on your keyboard, or start menu, quit emulation station.

Once at the Terminal command, enter: `ifconfig`

This will giving you a read out of information that includes your IP address.

The other way (easier way) is to go to the RetroPie menu, and choose the last option: Show IP address
- c. Input Username: pi (default)

d. Input Password: raspberry (default)

